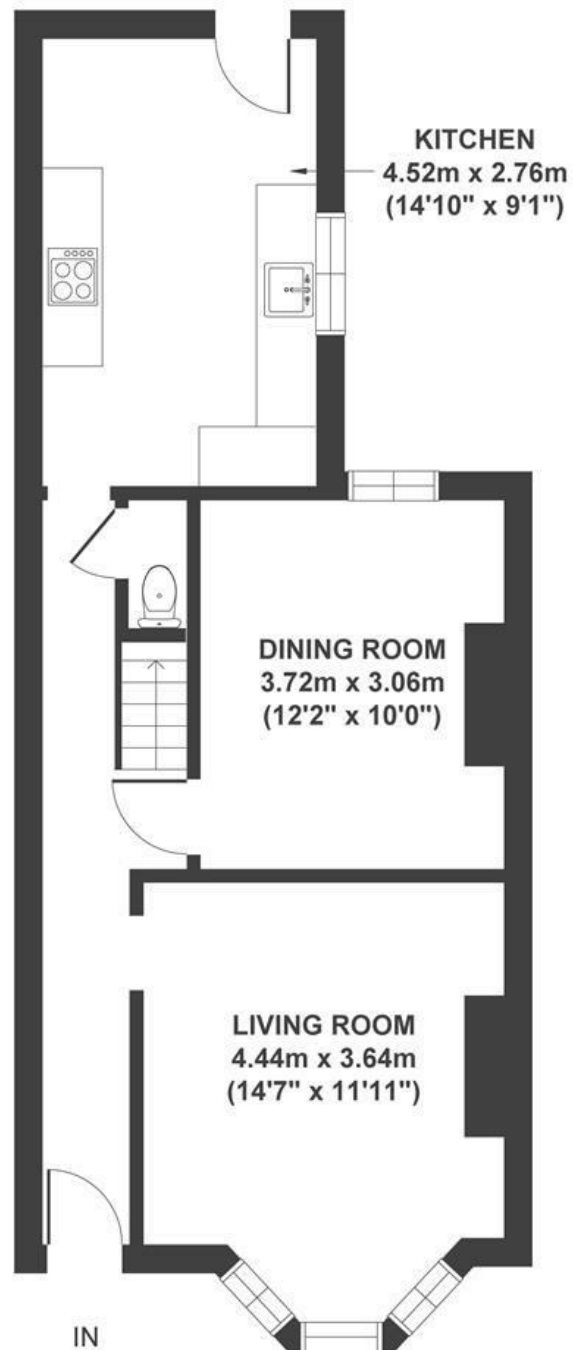


Victoria Avenue

REDFIELD

APPROXIMATE FLOOR AREA
98 SQM / 1055 SQFT



GROUND FLOOR



FIRST FLOOR

Boardwalk

Victoria Avenue , BRISTOL

£

£425,000



BS5 9NH

zzz

3 Bedrooms



2 Bathrooms

We have loved living in this house for the past 6 years. It was love at first sight with the period features- the cornices, the fireplaces, the scrubbed original floorboards- and we carefully restored them all as we renovated the house. The living room is cosy, especially with real fire crackling away in the winter. The back of the house is south-facing so it's filled with light for most of the day- hence the disco ball in one of the windows! Having access to the garden from the side road is so helpful and we love entertaining in the summer under the festoon lights.

The area itself is full of fantastic small businesses, like 3ft6 coffee, Loaf, Small City Books, and Prior. The house is right in the middle of two gorgeous parks- Netham and St George- both lovely for walks and picnics.

